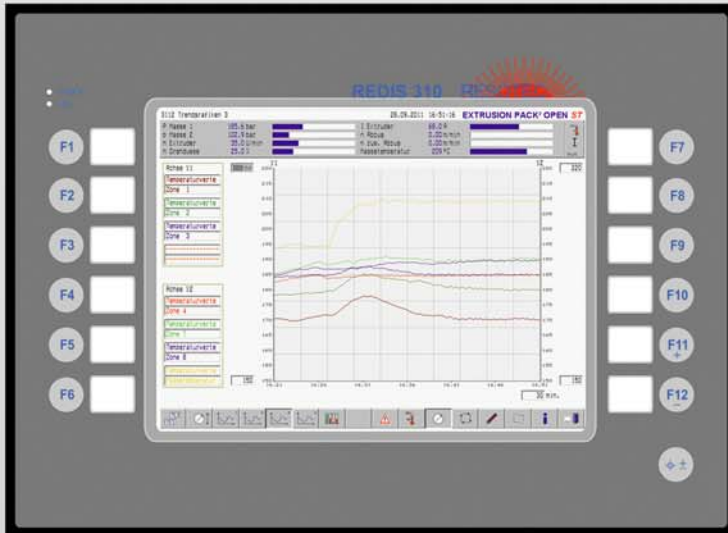


Datasheet REDIS 310



- Operating unit for machines and plants
- Fast and safe real-time operating system
- Easy to service and maintenance-free
- Various industrial and network interfaces
- Optional integrated I/O levels

Technical Data

Display	
Type	TFT
Colors	65535
Diagonal (inch)	10,4
Format	4:3
Resolution	640 x 480 pixels
Back lighting	LED
Durability at 25°C	Approx. 50.000 h
Brightness	400 Cd/m ² (center, type)
Contrast	700 : 1 (type)
Touch	
Technology	Analog resistive
Multitouch	no
Surface	Foil
Transparence	Light transmission 80 %
Buttons	
Touch buttons	12 function keys with push-in strips, 1 special key
Process buttons modul BP 32	no
Process buttons modul BP 64	no
Process buttons modul BP 128	no
Interfaces	
Ethernet	1 x RJ45 (10/100 MBit)
USB external	2 x USB 2.0
Serial interfaces (RT Target™)	2 x RS232/422/485 selectable
Profibus-DP Slave (RT Target™)	With additional module (optional)

Profibus-DP Master (RT Target™)	no
Profinet-IO Device (RT Target™)	With additional module (optional)
Processor	
CPU	Atlas STPC 133MHz
CPU (option Windows)	no
Memory	
RAM	32 MB
CF-Card	256 MB
Add. storage media	no
Clock	
Hardware clock	Buffered, can be synchronized
Extensions	
Digital I/O	With additional module, 16 inputs, 16 outputs (optional)
Electrical Connection	
Power supply	25 V DC, -15 % to +20 % acc. to IEC 1131-2
Current drawn	Approx. 1 A
Power consumption	Approx. 20 W
Protection	
Front	IP 65 acc. to EN 60529
Rear	IP 20 acc. to EN 60529
Environmental Conditions	
Operating temperature	0 to 50 °C
Storage temperature	-20 to 60 °C
Relative humidity	<80 %
Housing	
Overall dimensions (W x H) in mm	370 x 270
Cut-out dimensions (W x H) in mm	341 ⁺¹ x 241 ⁺¹
Mounting depth	Approx. 80 mm without connector
Front panel	Aluminum front panel with design foil
Housing lid	Stainless steel
Weight	3.2 kg
Certificates and Approvals	
CE conformity	EN 61000-6-4 emission, EN 61000-6-2 immunity
Operating Systems	
RT Target™	Version 15.22
RT Target™ with soft PLC	no
Windows™	no
Projecting	VISU4WINners from version Version 10 (using RT Target™)
Communication Protocols	
Profibus-DP Slave, S7-Ethernet, Profinet IO, Modbus RTU, VNC Server (option software licence), VNC Client (option software licence), FTP Server (TCP/IP), Resotec OPC (option software licence)	
Order no	
91597	

Herkules-Resotec Elektronik GmbH • Eisenstr. 7 • D-34225 Baunatal • Phone +49 561 / 94987-0 • FAX +49 561 / 4980-89
E-Mail: info@herkules-resotec.de • www.herkules-resotec.de