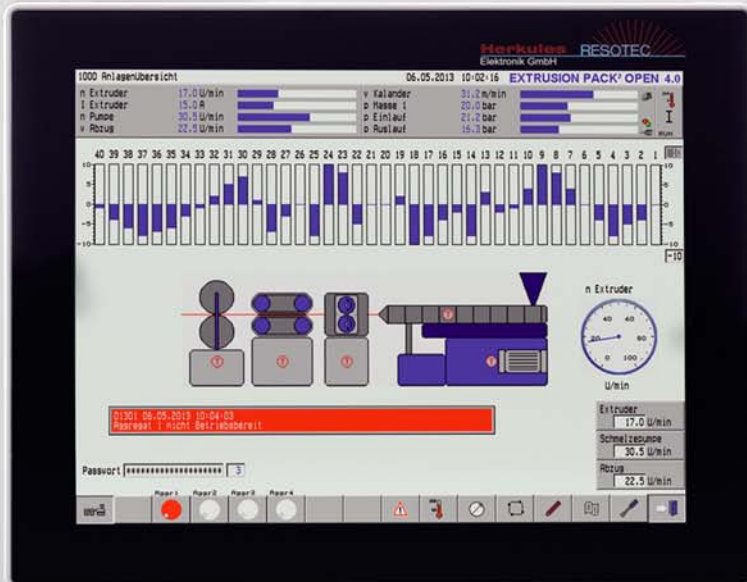


# Datasheet REDIS 2019



- Multitouch control panel for high-end application
- Wear-free safety glass front
- Fast and safe real-time operating system
- Easy to service and maintenance-free
- Various industrial and network interfaces
- Direct control tasks via Soft PLC and integrated I/O levels

## Technical Data

<b>Display</b>	
Type	TFT
Colors	65535
Diagonal (inch)	19
Format	5:4
Resolution	1280 x 1024 pixels
Back lighting	LED
Durability at 25 °C	Approx. 50.000 h
Brightness	350 Cd/m <sup>2</sup> (center, type)
Contrast	1000 : 1 (type)
<b>Touch</b>	
Technology	PCT (Projective Capacitive Touch)
Multitouch	2-fold
Surface	3 mm safety glass, antireflective chemical coating, UV resistant
Transparence	Light transmission 80 %
<b>Buttons</b>	
Touch buttons	no
Process buttons modul BP 32	no
Process buttons modul BP 64	no
Process buttons modul BP 128	no
<b>Interfaces</b>	
Ethernet	1 x RJ45 (1 GBit)
USB external	3 x USB 2.0
Serial interfaces (RT Target™)	2 x RS232/422/485 selectable
Profibus-DP Slave (RT Target™)	With additional module (optional)

Profibus-DP Master (RT Target™)	With additional module (optional)
Profinet-IO Device (RT Target™)	With additional module (optional)
<b>Processor</b>	
CPU	AMD G-T40R 1.0 GHz Single Core
CPU (option Windows™)	AMD G-T56R 1.6 GHz Dual Core
<b>Memory</b>	
RAM	1 GB to 4 GB
CF card	256 MB to 16 GB
Add. storage media	SSD, solid-state disk (optional)
<b>Clock</b>	
Hardware clock	Buffered, can be synchronized
<b>Extensions</b>	
Digital I/O	With additional module, 16 inputs, 16 outputs (optional)
<b>Electrical Connection</b>	
Power supply	24 V DC, -15 % to +20 % acc. to IEC 1131-2
Current drawn	Approx. 3 A
Power consumption	Approx. 60 W
<b>Protection</b>	
Front	IP 65 acc. to EN 60529
Rear	IP 20 acc. to EN 60529
<b>Environmental Conditions</b>	
Operating temperature	0 to 50 °C
Storage temperature	-20 to 60 °C
Relative humidity	<80 %
<b>Housing</b>	
Overall dimensions (W x H) in mm	468 x 392
Cut-out dimensions (W x H) in mm	450 <sup>+1</sup> x 374 <sup>+1</sup>
Mounting depth	Approx. 80 mm without connector
Front panel	Safety glass with aluminum bezel, silver anodized
Housing lid	Stainless steel
Weight	7.7 kg
<b>Certificates and Approvals</b>	
CE conformity	EN 61000-6-4 emission, EN 61000-6-2 immunity
<b>Operating Systems</b>	
RT Target™	Version 15.22
RT Target™ with soft PLC	Codesys™ version 2.3 (option)
Windows™	Supported interfaces: Ethernet RJ45, USB (optional)
Projecting	VISU4WINners from Version 10 (using RT Target™)
<b>Communication Protocols</b>	
Profibus-DP Slave, S7-Ethernet, Profinet IO, Modbus RTU, VNC Server (option software licence), VNC Client (option software licence), FTP Server (TCP/IP), Resotec OPC (option software licence), Profibus-DP Master (option using soft PLC)	
<b>Order no</b>	
92200 XXXX REDIS 2019	

Herkules-Resotec Elektronik GmbH • Eisenstr. 7 • D-34225 Baunatal • Phone +49 561 / 94987-0 • FAX +49 561 / 4980-89  
E-Mail: info@herkules-resotec.de • www.herkules-resotec.de