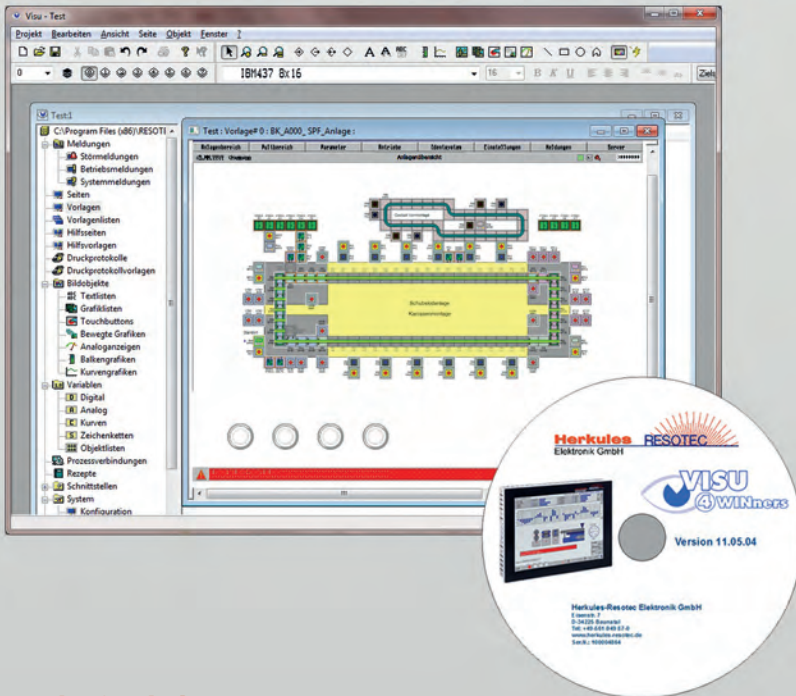


# Datasheet VISU4WINners

## Project-software for REDIS operating units



- Software tool for REDIS operating units for visualization and operation of machines and plants
- Complete functionality for all REDIS operating units
- Simple and clear user interface
- Efficient projecting from simple to complex applications with large amounts of data
- Interface for customized user functions

### Technical data

Version	11
System requirements	Windows 7 Professional™ (32, 64 Bit) Windows 10 Professional™ (32, 64 Bit) Hard disk space min. 256 MB RAM size min. 512 MB
Target devices	REDIS-series operating units with operating system RT-Target and related firmware
Languages	German, English
Languages within project	32 languages on target, free definition
Fonts	Fixed Fonts, TrueType Fonts, Unicode 2 Byte character
Graphic formats	jpg, bmp, tiff, gif, png
Objects and functions	Pages: - Graphics primitives - Input- and output fields - Texts, textfields und textlists, dynamic texts and textlists - Touchbuttons, dynamic touchbuttons, transparent touchbuttons - Graphical objects - Graphics and lists of graphics, dynamic graphics - Moving graphics and pictures - Analogue display instruments - Curve graphics - Bar graphics - Layer technics - Dynamic attributes (colors, hide, indicating) - Multiplexing Longtime trends and curves Zooming into curve graphics X/Y graphs

	Templates and lists of templates Templates with variable size Help-pages with templates Protocols with templates Recipes and recipes management Messages: - Fault messages, operating messages and system messages - Reporting system with alarm management - Messages configurable - Reporting archives Variables and text lists in reports Variables and objectlists Bridgefunction across communication channel Logbook Automatic weekly timer Logical operations
Filter for elements	Yes
Picture loading	Yes
Reports loading	Yes, CSV format (Excel™)
Reports import and export	Yes, CSV format (Excel™)
Report memory configurable	Yes
Variables import and export	Yes, CSV format (Excel™)
Internal variables	Yes
Groupes of objects import and export	Yes
Languages import and export	Yes, (Access™)
User functions	Yes, several, > 200
Customized functions	Yes, on demand
Input keyboards	Yes, customized options
Window characteristics	Yes, customized options
Project report printable	Yes, pdf format
Project archive storage	Yes
CF-Disk storage	Yes
Clipboard configurable	Yes
System diagnosis	Yes
Communication drives	PROFINET® IO <sup>1)</sup> , PROFIBUS® -DP <sup>2)</sup> , Ethernet/IP® <sup>3)</sup> , Modbus® <sup>4)</sup> , Mitsubishi-FX, CAN-Bus, Soft-PLC
Order no	90738

<sup>1)</sup> PROFINET® IO and the PROFINET® logo are registered trademarks of PROFINET® user organization e.V. (PNO)

<sup>2)</sup> PROFIBUS® -DP and the PROFIBUS® logo are registered trademarks of PROFIBUS® user organization e.V. (PNO)

<sup>3)</sup> Ethernet/IP® is a registered trademark of Xerox Corporation.

<sup>4)</sup> Modbus® is a registered trademark of Schneider Electric and is licensed by Modbus® Organization, Inc.